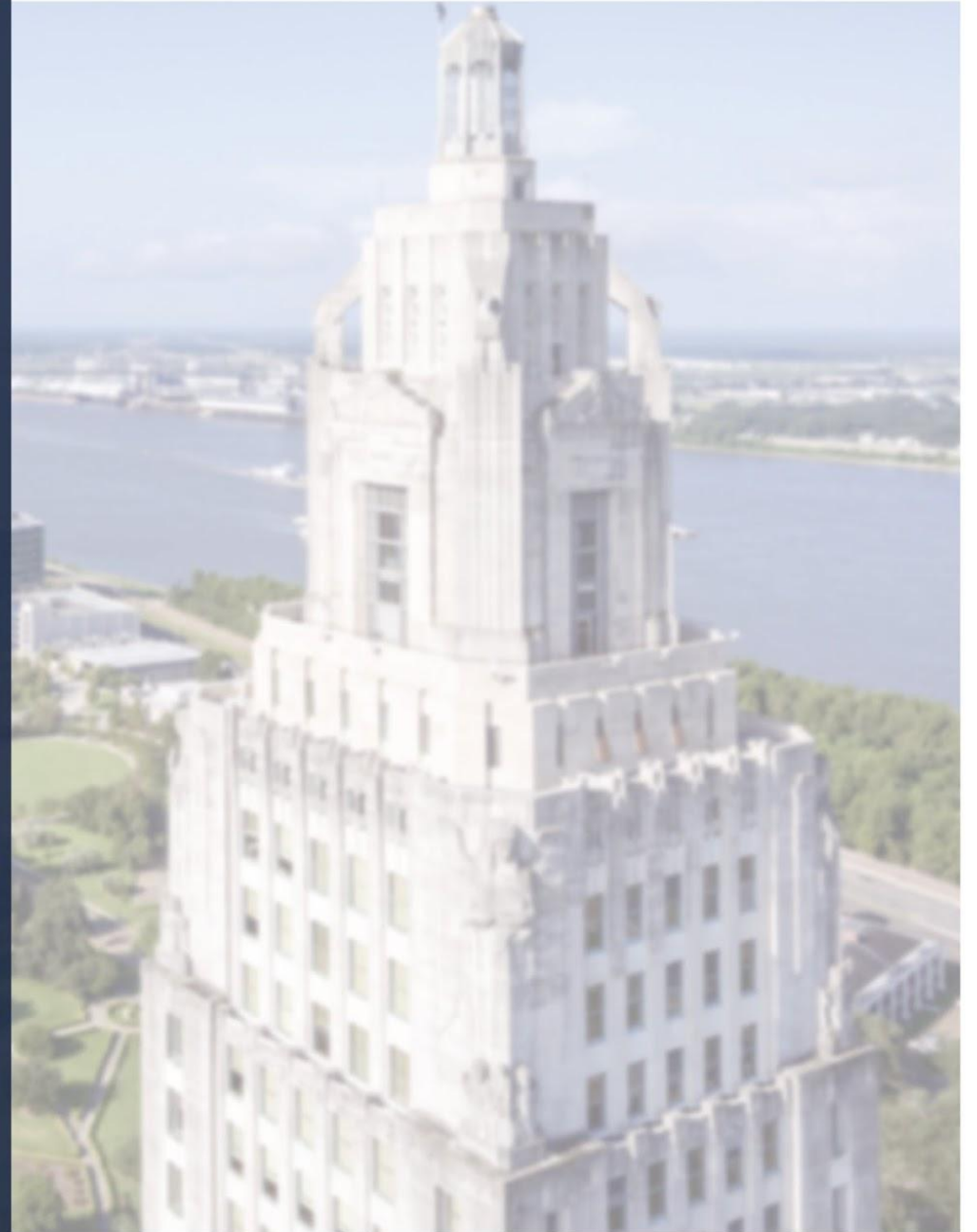




Gifted & Talented Identification Process

Superintendent Sito Narcisse, Ed.D.
Brandy Williams, Supervisor
Gifted and Talented Programs
July 19, 2023





Mission and Vision of the Gifted and Talented Programs

Our Mission

Providing an individualized learning environment that meets the intellectual, social, emotional, and creative needs of gifted and talented scholars.

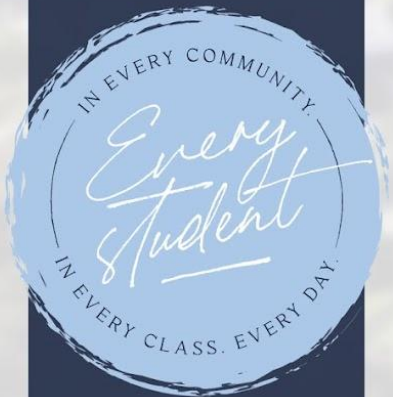
Our Vision

The EBR Gifted and Talented Program will enhance the global community by inspiring, cultivating, and producing the creative problem-solvers and intellectual leaders of tomorrow.



EBR

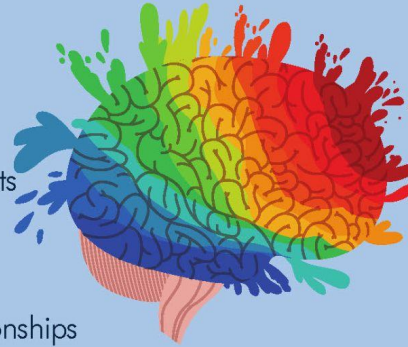
Gifted Identification Process



Gifted

characteristics

- Learns rapidly/easily
- Reads extensively
- Has an advanced vocabulary
- Retains a quantity of information
- Exhibits a long attention span
- Is curious and has a variety of interests
- Works independently
- Is alert and observant
- Has a good sense of humor
- Comprehends and recognizes relationships
- Is a high academic achiever
- Displays individuality
- Has self-motivation and is self-sufficient
- Demonstrates task commitment



Does your child exhibit these characteristics?

The East Baton Rouge Parish School System offers services to students who are gifted in grades pre-k to 12.

The first step in the gifted evaluation is to be screened.
Contact your child's school to schedule a screening.



Gifted Characteristics

Teacher(s): _____ Grade: _____ Student: _____
 SID #: _____ DOB: _____ School: _____ Date: _____

Highlight	Szabos, J. (1989). <i>Bright child, gifted learner</i> . Challenge, 34. Good Apple		Whitmore, J (1960). <i>Giftedness, Conflict and Underachievement</i> . Allyn and Bacon	Sayler, M.F. (2001) <i>Things this young child has done</i> .	
	BRIGHT LEARNERS	GIFTED LEARNERS	GIFTED UNDERACHIEVERS	1=Rarely, 2=Sometimes, 3=Often, 4=Nearly always, NO=Not Observed (Please rate all)	
HUMOR	Gets children's jokes	Gets adult's jokes	Observe/interact with the child over 2 weeks. If 10+ traits are observed (including all asterisked), an intelligence test is recommended	Characteristic	
MOTIVATION	*Enjoys school *Completes projects *Stays on task *Attentive	*Enjoys learning *Initiates projects *Has trouble stopping tasks *Mentally/physically involved	*Poor test performance *Achieving at or below grade-level expectations in 1/all basic areas (reading, math, language, art) *Daily work often incomplete/poorly done *Superior comprehension/retention when interested *Vast gap between qualitative level of oral & written work	Shows intense curiosity & deeper knowledge than other children	
INTERESTS	Interested	Highly curious	Exceptionally large range of knowledge (facts) Vitality of imagination (creative) Persistent dissatisfaction of work accomplishments	Is empathetic; feels more deeply than peers	
COMMUNICATION	Has good ideas	Has lots of wild, crazy ideas		Uses advanced vocabulary	
INQUIRY	*Answers questions *Receptive	*Asks the questions *Is intense	*Avoids trying new activities due to perfectionist tendencies Pursues self-selected projects (home) *Has a wide range of interests and possible special expertise in an area of investigation and research *Evidences low self-esteem, in tendencies to withdraw or be aggressive in class Doesn't function comfortably or constructively in a group of any size	Reads, writes or uses numbers in advanced ways	
PROBLEM SOLVING	*Solves problems using given format *Follows rules	*Solves problems with own format *Manipulates rules		Shows acute sensitivity and perceptions related to self, others and life in general	
EMPATHY	*Listens with interest *Enjoys peers	*Shows strong feelings/emotions *Prefers adults	Sets unrealistic expectations (goals to high/low) Dislikes drills/work for mastery/memorization Easily distracted/unable to focus on task Indifferent/negative attitude towards school Resists teacher efforts in class (to motivate/discipline) Maintains few friendships/difficulty with peers	Advanced play interests and behaviors	
INTUITION	In top group	Beyond the group		Shows unusually intense interests and enjoyment when learning new things	
IMAGINATION CREATIVENESS	*Copies accurately *Follows expected patters *Some clever ideas *Technician	*Creates new designs *Unusual idea combos *Multiple ingenious ideas *Inventor	Shows leadership abilities	Advanced sense of humor; sees incongruities as funny	
MEMORY KNOWLEDGE UNDERSTANDING	*Good Memorizer *Absorbs info *Grasps meaning *Understands ideas *Knows the answer	*Good Guesser *Manipulates info *Draws inferences *Constructs abstractions *Elaborate/discusses in detail		Comfortable around older children/adults	
LEARNING	*Works hard *6-8 repetitions *Learns with ease *Enjoys sequential presentations *Passed with own learning	*Plays around, yet tests well *1-2 repetitions to mastery *Already knows *Thrives on complexity *Is highly self-critical	Shows logical/metacognitive skills managing own learning	Resourceful/Improvises well	
			Uses imaginative methods to accomplish tasks		

What do you do when you get a request for a Gifted screening?

Option 1

Send home the [Permission to Screen form](#).

Screen student using the KBIT-2 R (can be checked out for Gifted Screenings).

For possible placement: Email the results (front page) to gifted@eberschools.org.
or
Contact your PAS Representative to have the student fully evaluated.

Option 2

Complete the [School Screening Request Google Form](#) online and upload the signed [parent permission form](#).

The Gifted & Talented Department will handle the rest!



Gifted Screeners

The KBIT-2 Revised: both verbal and non-verbal skills

The Naglieri: test only non-verbal skills

The Gifted & Talented Department uses the Naglieri during our annual Summer Screening Blitz. Students who were screened in the summer may be re-screened using the KBIT-2R before the 6 month waiting period is up.

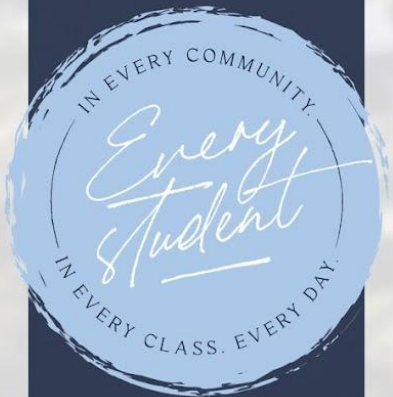


The logo for EBR, featuring the letters 'E', 'B', and 'R' in a stylized, white, serif font with decorative flourishes, set against a dark blue background.

EBR

A blurred, high-angle photograph of a cityscape with a prominent green park area in the foreground, serving as the background for the slide.

Talented Identification Process

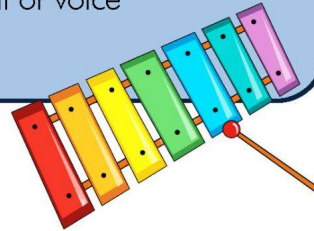


Talented **MUSIC**



characteristics:

- seeks out opportunities to participate in musical activities both in and out of school
- performs on one or more instruments in an exceptional musical manner
- carries a tune easily and with confidence
- is sensitive to the rhythm and changes in tempo of music
- demonstrates technical ability on instrument or voice
- matches pitch, reproduces rhythms
- creates or improvises music



Does your child exhibit these characteristics?

Would you like your child to learn from working musicians?

The East Baton Rouge Parish School System offers services to students who are talented in visual art, music, and theatre.

The first step in the talented evaluation is to be screened by a teacher familiar with your child's gifts. Contact your child's school to schedule a screening.



Talented THEATRE

characteristics:

- Shows a variety of facial expressions and ease of body movement.
- Seeks out opportunities to perform formally or informally.
- Shows a marked ability to reproduce detailed physical and/or vocal behaviors of others.
- Uses a variety of vocal changes and inflections in reading or telling stories.
- Communicates ideas with creativity, feeling and detail.
- Can improvise situations/actions physically.
- Can improvise dialogue.
- Can take suggestions and direction.
- Can focus and concentrate during activities.



Does your child exhibit these characteristics?

Would you like your child to learn from working actors & directors?

The East Baton Rouge Parish School System offers services to students who are talented in visual art, music, and theatre.



The first step in the talented evaluation is to be screened by a teacher familiar with your child's gifts.

Contact your child's school to schedule a screening.




Gifted & Talented



Talented Art

characteristics:

- Work goes beyond simple representation to include details or elements of self expression, feelings, or moods, fresh approach to ways of viewing things.
- Includes more detail than typical; is meticulous to an almost excessive degree; catches on to balance, foreshadowing, shading, and perspective, very easily; enjoys challenging experiences.
- Lines and details display a high degree of empathy or attention to characteristics and details that others miss.
- Is eager to work with new media or subject matter and continues to attempt to master each one.

Does your child exhibit these characteristics?

Would you like your child to learn from working artists?

The East Baton Rouge Parish School System offers services to students who are talented in visual art, music, and theatre.

The first step in the talented evaluation is to be screened by a teacher familiar with your child's gifts.

Contact your child's school to schedule a screening.



CHARACTERISTICS OF TALENT

VISUAL ART	MUSIC	THEATRE
<ul style="list-style-type: none"> • Work goes beyond simple representation to include details or elements of self-expression, feelings, or moods, fresh approach to ways of viewing things. • Includes more detail than typical; is meticulous to an almost excessive degree; catches on to balance, foreshadowing, perspective, and shading very easily; enjoys challenging experiences. • Lines and details display a high degree of empathy or attention to characteristics and details that others miss. • Is eager to work with new media or subject matter and continues to attempt to master each one. (NOTE: A student may learn to draw a favorite subject matter quite well through constant practice, but this skill does not transfer to other subject matter. The same situation may occur in regards to a particular media in which a student has worked frequently). • Anxious to participate in art activities beyond assignments, both in and out of school. 	<ul style="list-style-type: none"> • Demonstrates technical ability on instrument/voice. • Is sensitive to the rhythm and changes in tempo of music. • Carries tune easily and with confidence. • Demonstrates high levels of concentration for a sustained period of time while practicing. • Matches pitch, reproduces rhythms. • Seeks out opportunities to participate in musical activities both in and out of school. • Is eager to improve and readily accepts new solutions to technical problems. • Performs on one or more instruments in exceptionally musical manner. • Creates or Improvises Music. 	<ul style="list-style-type: none"> • Shows a variety of facial expressions. • Shows variety in and ease of body movement. • Seeks out opportunities to perform formally or informally. • Shows a marked ability to reproduce detailed physical and/or vocal behaviors of others. • Can create an imaginary or scripted character different than them using a variety of physical and vocal characteristics. • Uses a variety of vocal changes and inflections in reading or telling stories. • Communicates ideas with creativity, feeling and detail. • Displays emotions freely. • Can improvise situations/actions physically. • Can improvise dialogue. • Can take suggestions and direction. • Can focus and concentrate during activities.

What do you do when you get a request for a Talented screening?

Option 1

Send home the [Permission to Screen form](#).

Send home the appropriate [screening preparation information](#) with the student.

The student's current music, art, or theatre teacher will need to complete the appropriate [screening instrument](#).

Contact your PAS Representative to have the student fully evaluated.

Option 2

Complete the [School Screening Request Google Form](#) and upload the signed parent permission form.

The Gifted & Talented Department will collaborate with you to handle the request!



Visual Art



Theatre K-6

Theatre 7-12

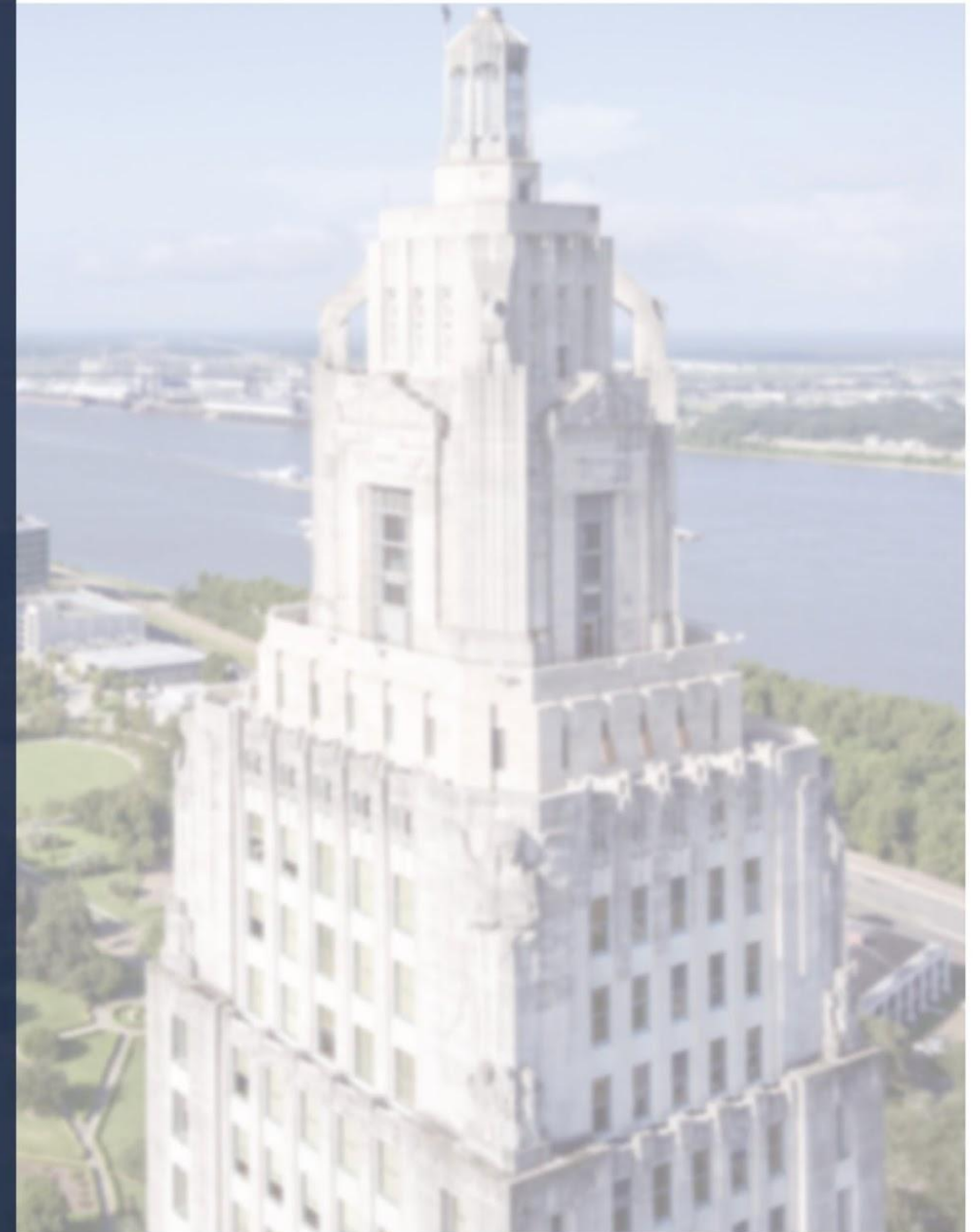
Monologues 4-6

Monologues 7-12



Music

**Student Preparation for
Talented Screening**





Music

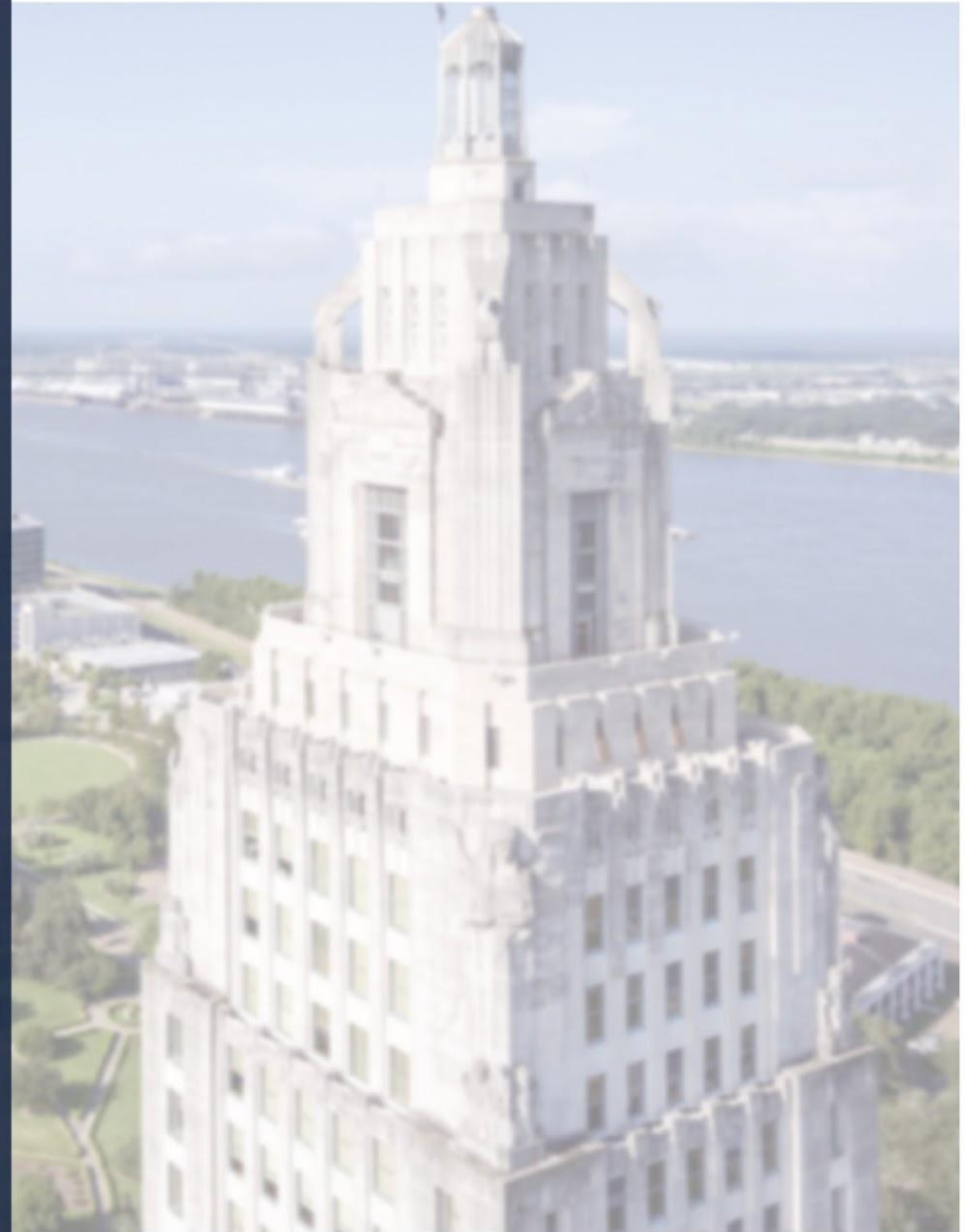


Theatre



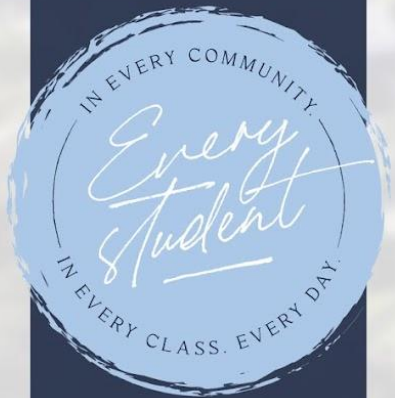
Visual Art

**Talented Screening
Instruments**



EBR

Questions?



Contact Information

Brandy D. Williams
Supervisor of Gifted and Talented Programs
225-929-8642
bwilliams13@ebrschools.org

Kay Monceaux
Gifted Curriculum Specialist
225-929-8742
monceaux@ebrschools.org

Harelda Wallace
Gifted Curriculum Resource Coordinator
225-929-8777
hsmith@ebrschools.org

Joann Wright
Secretary to the Gifted Supervisor
225-929-8642
jwright@ebrschools.org

Esther Barthe'
Gifted Data Specialist
225-929-8638
eslewis@ebrschools.org